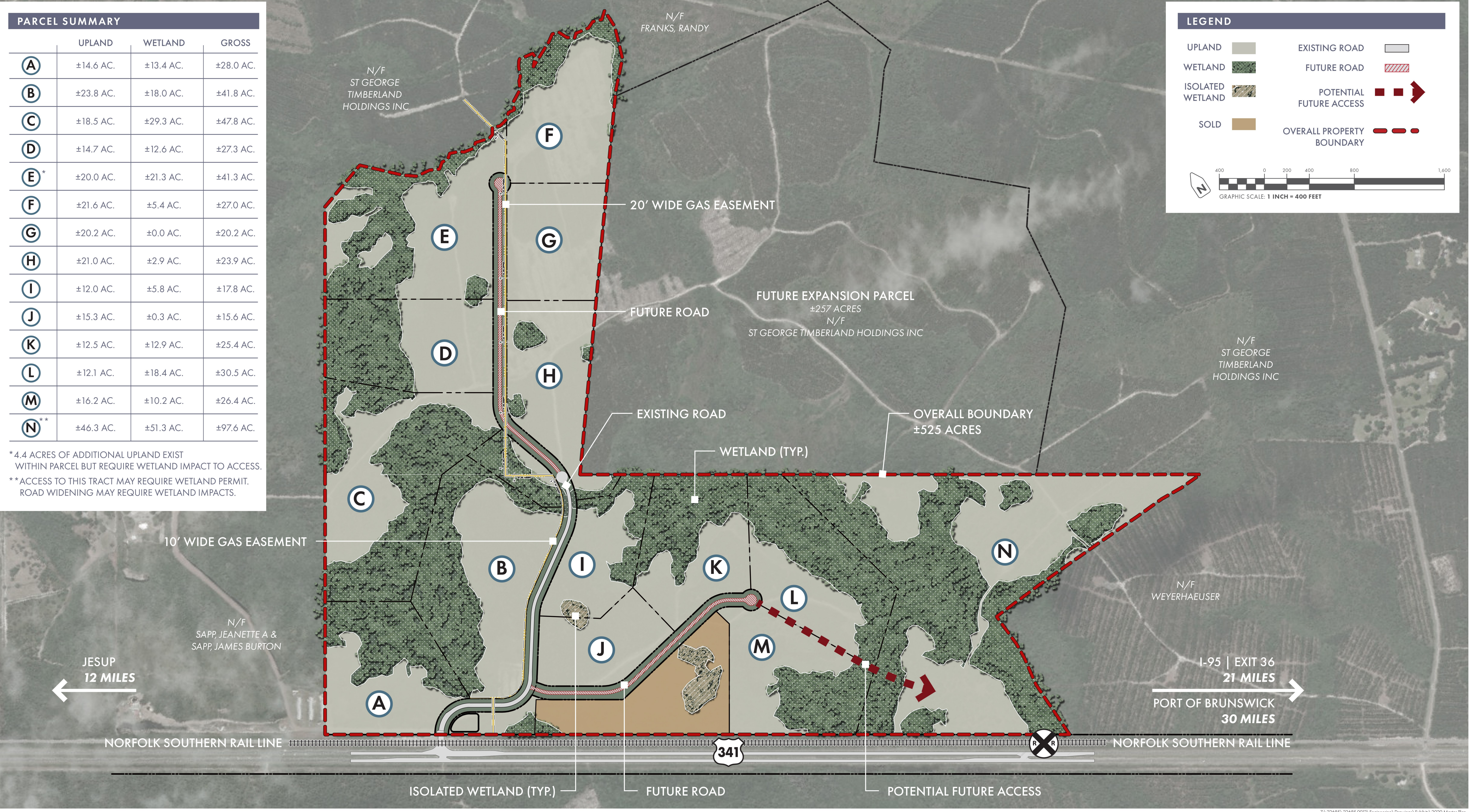


PARCEL SUMMARY

	UPLAND	WETLAND	GROSS
(A)	±14.6 AC.	±13.4 AC.	±28.0 AC.
(B)	±23.8 AC.	±18.0 AC.	±41.8 AC.
(C)	±18.5 AC.	±29.3 AC.	±47.8 AC.
(D)	±14.7 AC.	±12.6 AC.	±27.3 AC.
(E)*	±20.0 AC.	±21.3 AC.	±41.3 AC.
(F)	±21.6 AC.	±5.4 AC.	±27.0 AC.
(G)	±20.2 AC.	±0.0 AC.	±20.2 AC.
(H)	±21.0 AC.	±2.9 AC.	±23.9 AC.
(I)	±12.0 AC.	±5.8 AC.	±17.8 AC.
(J)	±15.3 AC.	±0.3 AC.	±15.6 AC.
(K)	±12.5 AC.	±12.9 AC.	±25.4 AC.
(L)	±12.1 AC.	±18.4 AC.	±30.5 AC.
(M)	±16.2 AC.	±10.2 AC.	±26.4 AC.
(N)**	±46.3 AC.	±51.3 AC.	±97.6 AC.

*4.4 ACRES OF ADDITIONAL UPLAND EXIST WITHIN PARCEL BUT REQUIRE WETLAND IMPACT TO ACCESS.
 **ACCESS TO THIS TRACT MAY REQUIRE WETLAND PERMIT. ROAD WIDENING MAY REQUIRE WETLAND IMPACTS.



LEGEND

- UPLAND (light green swatch)
- WETLAND (dark green swatch)
- ISOLATED WETLAND (hatched swatch)
- SOLD (brown swatch)
- EXISTING ROAD (solid grey line)
- FUTURE ROAD (dashed red line)
- POTENTIAL FUTURE ACCESS (red arrow)
- OVERALL PROPERTY BOUNDARY (dashed red line)

GRAPHIC SCALE: 1 INCH = 400 FEET



ILLUSTRATIVE SITE PLAN
US 341 REGIONAL INDUSTRIAL PARK
 WAYNE COUNTY, GEORGIA

FEBRUARY 10, 2020

PREPARED BY:
THOMAS & HUTTON
 1208 NEWCASTLE STREET • SUITE 201
 BRUNSWICK, GA 31520 • 912.466.0536
 WWW.THOMASANDHUTTON.COM

This map illustrates a general plan of the development which is for discussion purposes only, does not limit or bind the owner/developer, and is subject to change and revision without prior written notice to the holder. Dimensions, boundaries and position locations are for illustrative purposes only and are subject to an accurate survey and property description.

COPYRIGHT © 2019 THOMAS & HUTTON